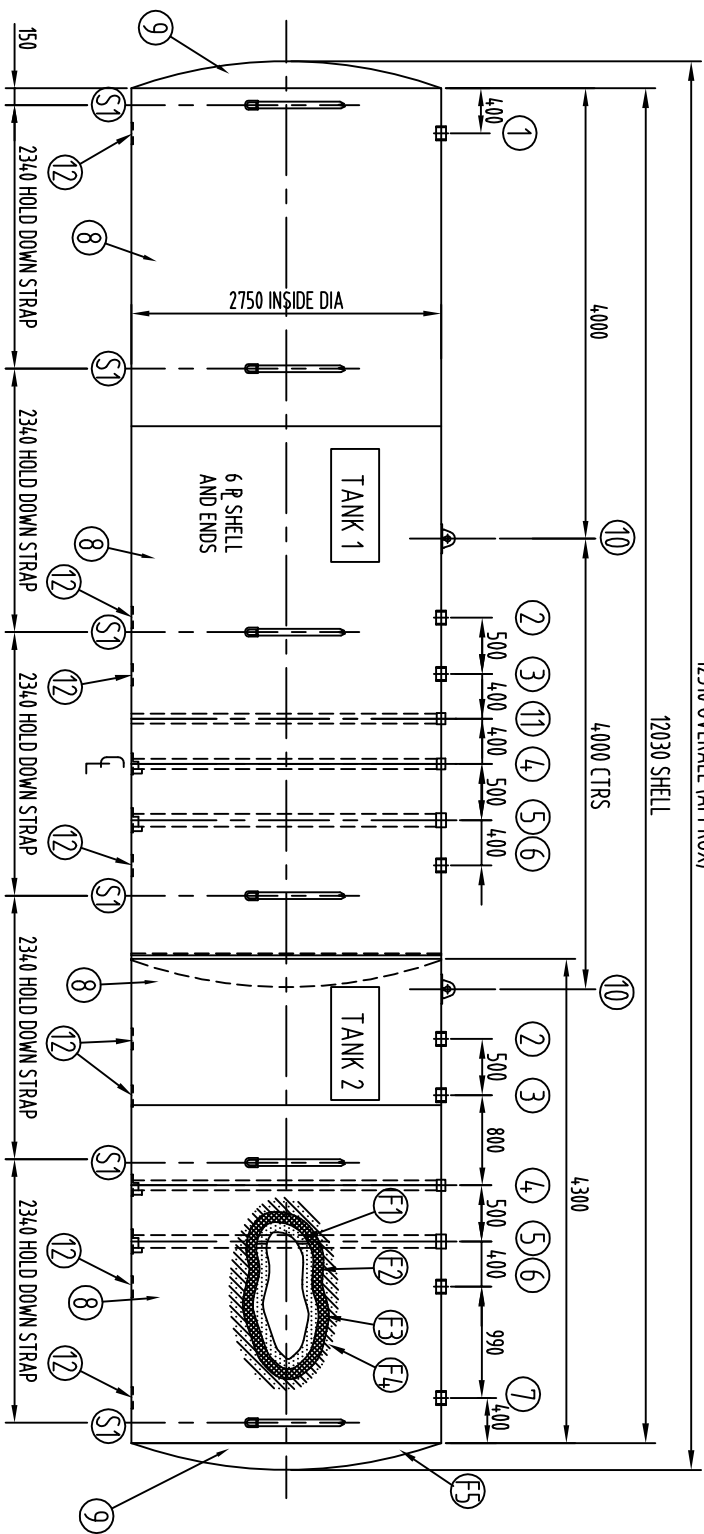


12510 OVERALL (APPROX)

12030 SHELL



TANK 1 VOLUME = 47,000 LITRES APPROX

TANK 2 VOLUME = 25,000 LITRES APPROX

NOTE:

- 1: VACUUM ON INTERSTITIAL SPACE IS FACTORY SET & GAUGE SET
- 2: INSTALLATION AS PER GLASTEEL II INSTALLATION INSTRUCTIONS & APPLICABLE CODES
- 3: VESSEL IDENTIFICATION No. & MANUFACTURE DATE ARE LAMINATED TO TOP OF VESSEL
- 4: VESSEL MANUFACTURED TO AS1692 AND AIR TESTED TO 35 kPa
- 5: PLASTIC LIFTING LUG COVERS SUPPLIED WITH VESSEL
- 6: HOLD DOWN STRAPS POSITION ARE TO BE MARKED ON VESSEL DURING MANUFACTURING

- 7: ALL SOCKETS TO BE CLEANED AND FITTED WITH PLASTIC DUST CAPS
- 8: 6mm STRIKER PLATES TO BE FITTED UNDER ALL OPENINGS
- 9: ALL GRC JOINTS TO BE JOGGLED
- 10: VOLUME = 12,700 L (APPROX)
- 11: WEIGHT OF TANK = 6,180 kg (APPROX)

ITEM	QTY	DESCRIPTION	PART / SUB ASSM No.
S1	6	HOLD DOWN STRAPS	015002
	1	VACUUM MONITOR GAUGE	006337, 017111, 017160
	2	LIFTING LUG COVERS	015071
	2	DIPSTICK T70 SPECIAL	-
		ACCESSORIES	

No.	REVISION DETAILS	BY	DATE
A	ORIGINAL ISSUE		

ITEM	QTY	DESCRIPTION	PART / SUB ASSM No.
12	8	STRIKER PLATE	SUB1047
11	1	50NB (BSP) MONITOR SOCKET C/W INTERNAL PIPE	SUB1082
10	2	LIFTING LUG - 5 TONNE C/W DOUBLER PAD	SUB1076
9	2	END & F SLIP IN 2750 ID x 6 PLATE	SUB1015
8	3	SHELL Ø2750 ID x 6 PLATE x 3000 LONG	SUB1039
7	1	100NB BLACK STEEL SOCKET	006395
6	2	100NB BLACK STEEL SOCKET	006395
5	2	100NB FILL SOCKET C/W PIPE	SUB1057
4	2	80NB DIP SOCKET C/W PIPE	SUB1052
3	2	100NB BLACK STEEL SOCKET	006395
2	2	100NB BLACK STEEL SOCKET	006395
1	1	100NB BLACK STEEL SOCKET	006395

CLIENT: FTS STD  
 DRAWN: V.B.B. DATE: 04-06-03  
 CHECKED: DATE:  
 APPROVED: DATE:  
 ORDER No: No OFF: ONE (1)  
 SCALE: N.T.S. CAD REF: JS-GST-SC-S

TITLE: GENERAL ARRANGEMENT T70 SPLIT (45/25)  
 GLASTEEL II U/G STORAGE VESSEL (6mm SHELL)

ESTIMATE NUMBER: N/A  
 DRAWING NUMBER: JD 070000-000

JOB No: SHEET: 1 of 1 REVISION: A

VESEL CLASS N/A  
 SHEET SIZE A3

PO BOX 102  
 CARBRIDGE N.S.W. 2294  
 PHONE (02) 4961-2745  
 FAX (02) 4962-2812

THIS DRAWING & THE INFORMATION CONTAINED HEREIN IS THE PROPERTY OF FIBRETEK SYSTEMS AND IS STRICTLY CONFIDENTIAL & MUST NOT BE USED OR DISCLOSED WITHOUT WRITTEN CONSENT OF FIBRETEK SYSTEMS Pty LIMITED