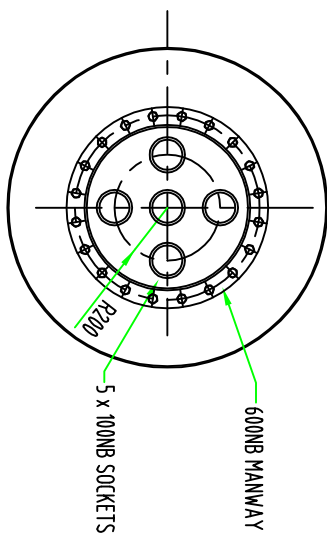
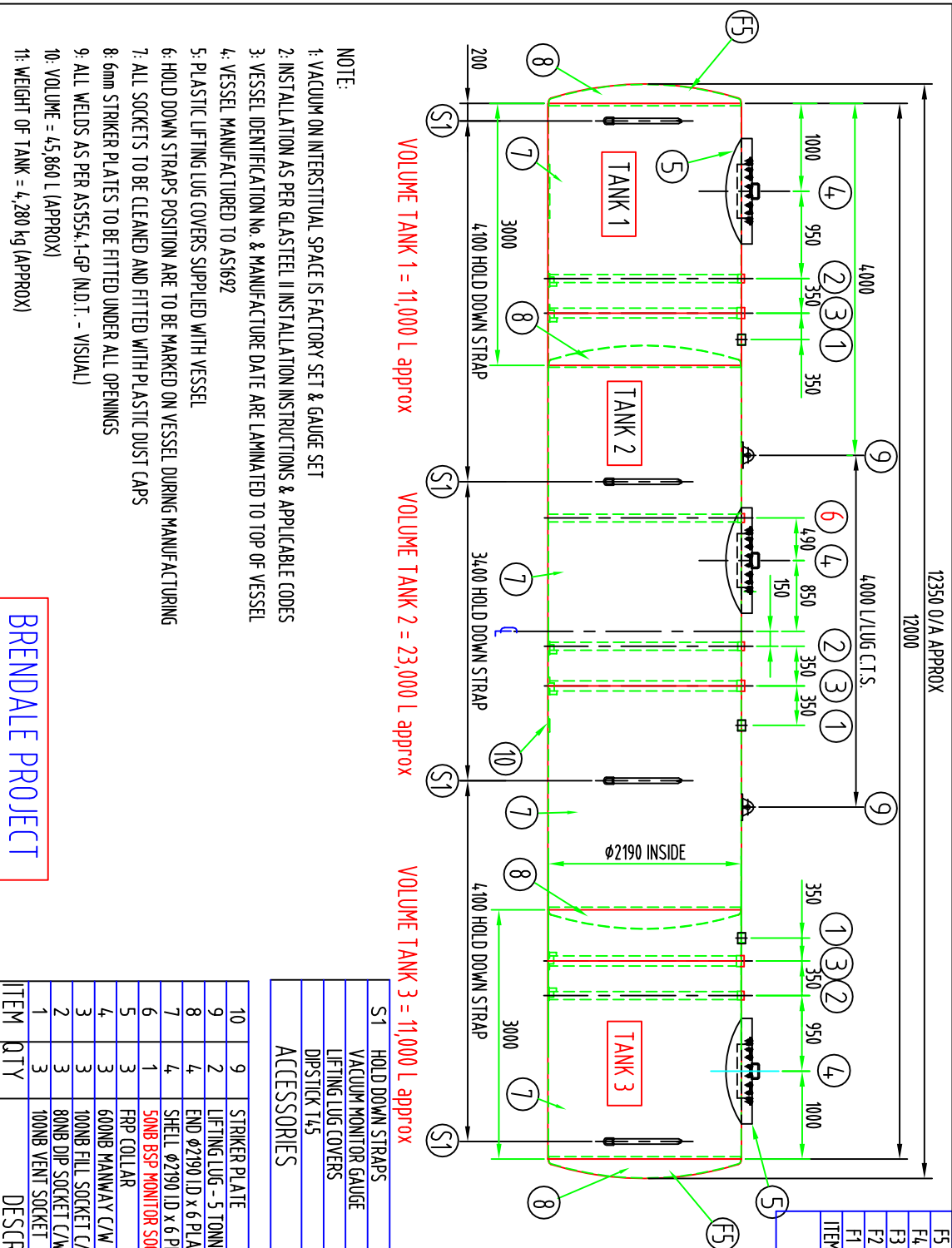


No.	REVISION DETAILS	BY	DATE
F			
E			
D			
C			
B			
A	ORIGINAL ISSUE	0	0

CLIENT: TANK SOLUTIONS	
DRAWN: T.A.H.	DATE: 04-08-06
CHECKED:	DATE:
APPROVED:	DATE:
ORDER NO.:	NO. OFF: ONE (1)
SCALE: N.T.S.	CAD REF: JT-GST-TC-P
Dimension in millimetres and/or client requirement.	
JOB No.:	DRAWING NUMBER: JT 045000-001
SHEET: 1 of 1	REVISION: A



PLAN VIEW ON MANWAY

ITEM	DESCRIPTION	QTY	PART / SUB ASSM No.
F5	RUST RED FLOW/COAT	-	
F4	GLASS OWENNS CORNINS 360 RR	-	
F3	CATALYST	-	
F2	AROPOL 7241PS/PW	-	
F1	STAND OFF MATERIAL	-	
ITEM	DESCRIPTION	QTY	WEIGHT

FIBREGLASS	
FIBRE TANK SYSTEMS	
PTY LIMITED	
PO BOX 102	CARRINGTON N.S.W. 2294
PHONE (02) 4961-2745	
FAX (02) 4962-2812	
THIS DRAWING & THE INFORMATION CONTAINED HEREIN IS THE PROPERTY OF FIBRE TANK SYSTEMS AND IS STRICTLY CONFIDENTIAL & MUST NOT BE USED OR DISCLOSED WITHOUT WRITTEN CONSENT OF FIBRE TANK SYSTEMS Pty LIMITED	

- NOTE:
- VACUUM ON INTERSTITIAL SPACE IS FACTORY SET & GAUGE SET
 - INSTALLATION AS PER GLASTEEL II INSTALLATION INSTRUCTIONS & APPLICABLE CODES
 - VESSEL IDENTIFICATION No. & MANUFACTURE DATE ARE LAMINATED TO TOP OF VESSEL
 - VESSEL MANUFACTURED TO AS1692
 - PLASTIC LIFTING LUG COVERS SUPPLIED WITH VESSEL
 - HOLD DOWN STRAPS POSITION ARE TO BE MARKED ON VESSEL DURING MANUFACTURING
 - ALL SOCKETS TO BE CLEANED AND FITTED WITH PLASTIC DUST CAPS
 - 6mm STRIKER PLATES TO BE FITTED UNDER ALL OPENINGS
 - ALL WELDS AS PER AS1554.1-GP (N.D.T. - VISUAL)
 - VOLUME = 45,860 L (APPROX)
 - WEIGHT OF TANK = 4,280 kg (APPROX)

BRENDALE PROJECT

10	9	STRIKER PLATE	SUB104.7
9	2	LIFTING LUG - 5 TONNE C/W DOUBLER PAD	SUB107.6
8	4	END Ø2190 ID x 6 PLATE	SUB100.4
7	4	SHELL Ø2190 ID x 6 PLATE x 3000 LONG	SUB103.6
6	1	50NB BSP MONITOR SOCKET C/W PIPE	SUB102.8
5	3	FRP COLLAR	SUB109.5
4	3	600NB MANWAY C/W 5 x 100NB SOCKETS	SUB105.6
3	3	100NB FILL SOCKET C/W PIPE	SUB105.1
2	3	80NB DIP SOCKET C/W PIPE	
1	3	100NB VENT SOCKET	

S1	HOLD DOWN STRAPS	4	015001
	VACUUM MONITOR GAUGE	1	006131, 017111, 017160
	LIFTING LUG COVERS	2	015071
	DIPSTICK T145	2	SUB107.0
	ACCESSORIES	QTY	PART / SUB ASSM No.